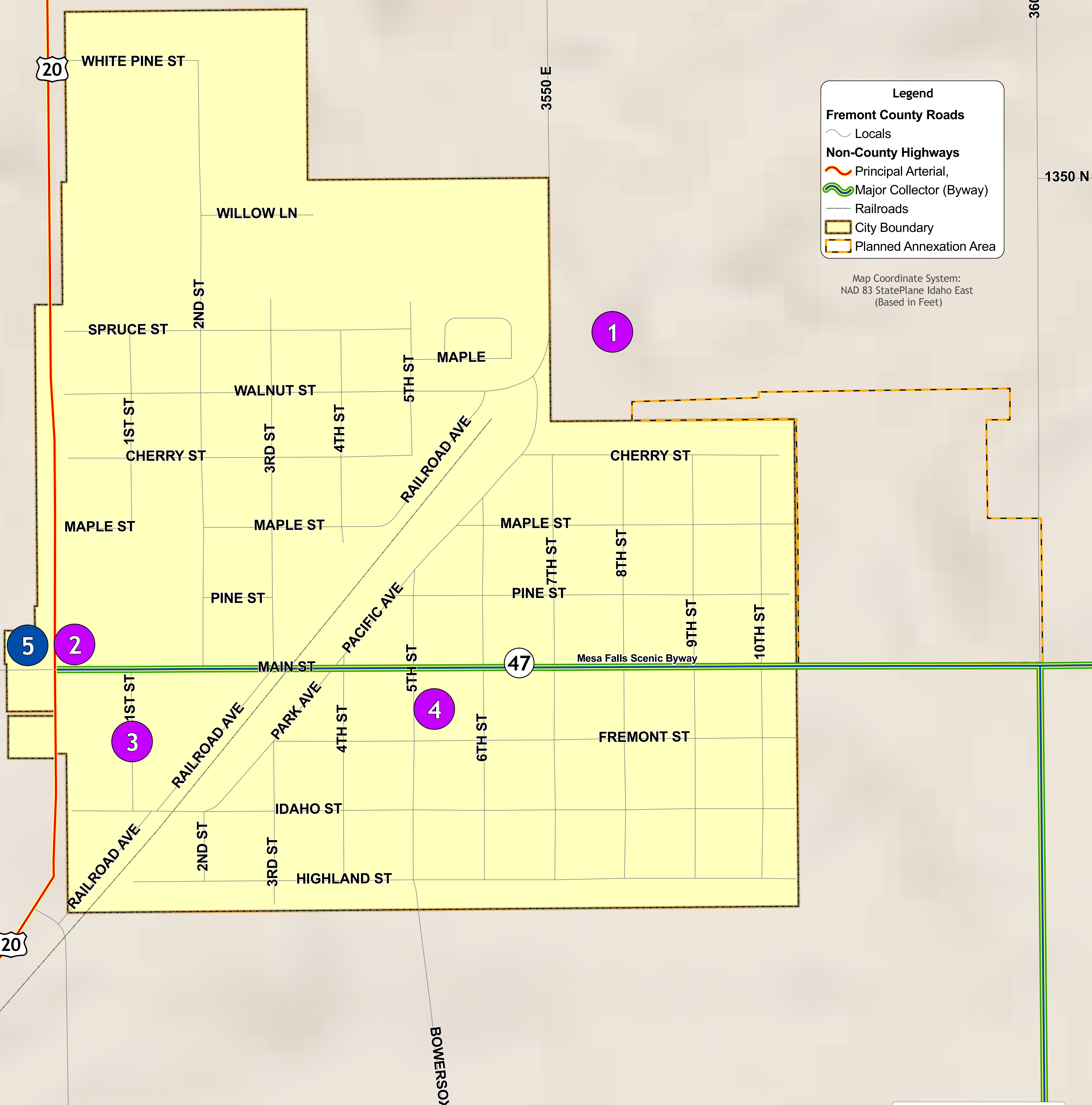


CITY OF ASHTON MASTER TRANSPORTATION PLAN

Exhibit 3-2



Legend

Fremont County Roads

- Locals

Non-County Highways

- Principal Arterial,
- Major Collector (Byway)
- Railroads

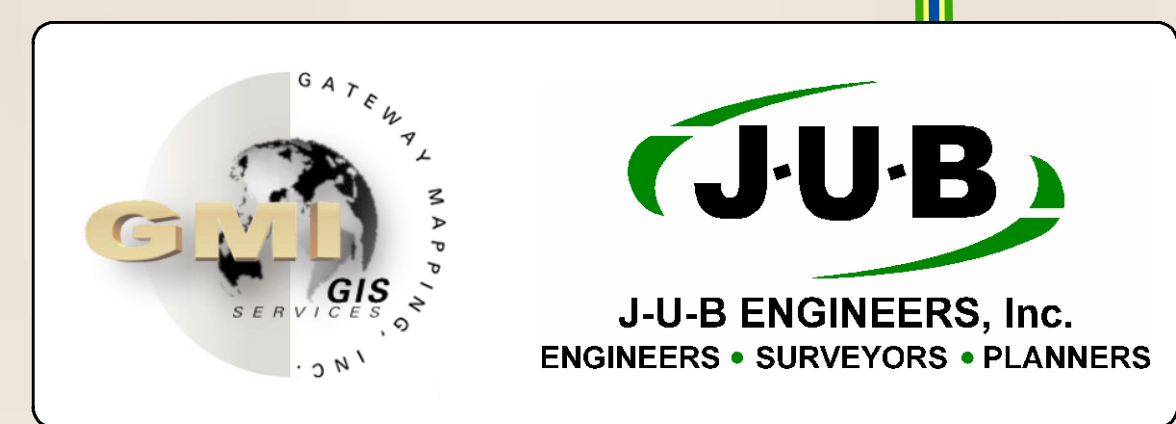
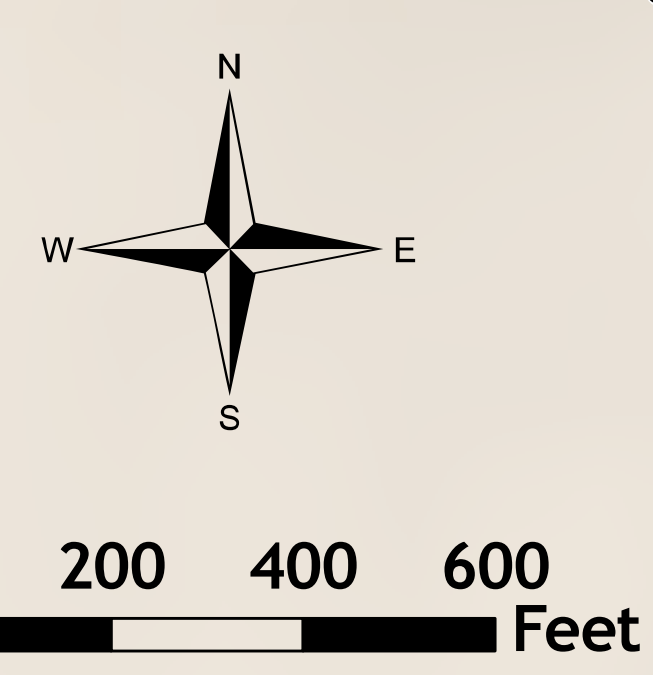
City Boundary

Planned Annexation Area

Map Coordinate System:
NAD 83 StatePlane Idaho East
(Based in Feet)

Transportation Projects Planned (2006)

- 1 New trailhead parking lot surface for Rails-to-Trails pathway
- 2 Intersection at US Hwy 20 and Hwy 47 - signalize and reinstall flashing lights
- 3 1st Street - crack seal and chip sealing
- 4 Pursue public transportation opportunities with Targhee Regional Transportation
- 5 US 20 Intersection Improvement (Key No. 08625)



Plot Date: March 2006