

Fremont County Fire District Boundaries

Map 2.16



Highways

Type

- US
- STATE
- Other Highways

Roads

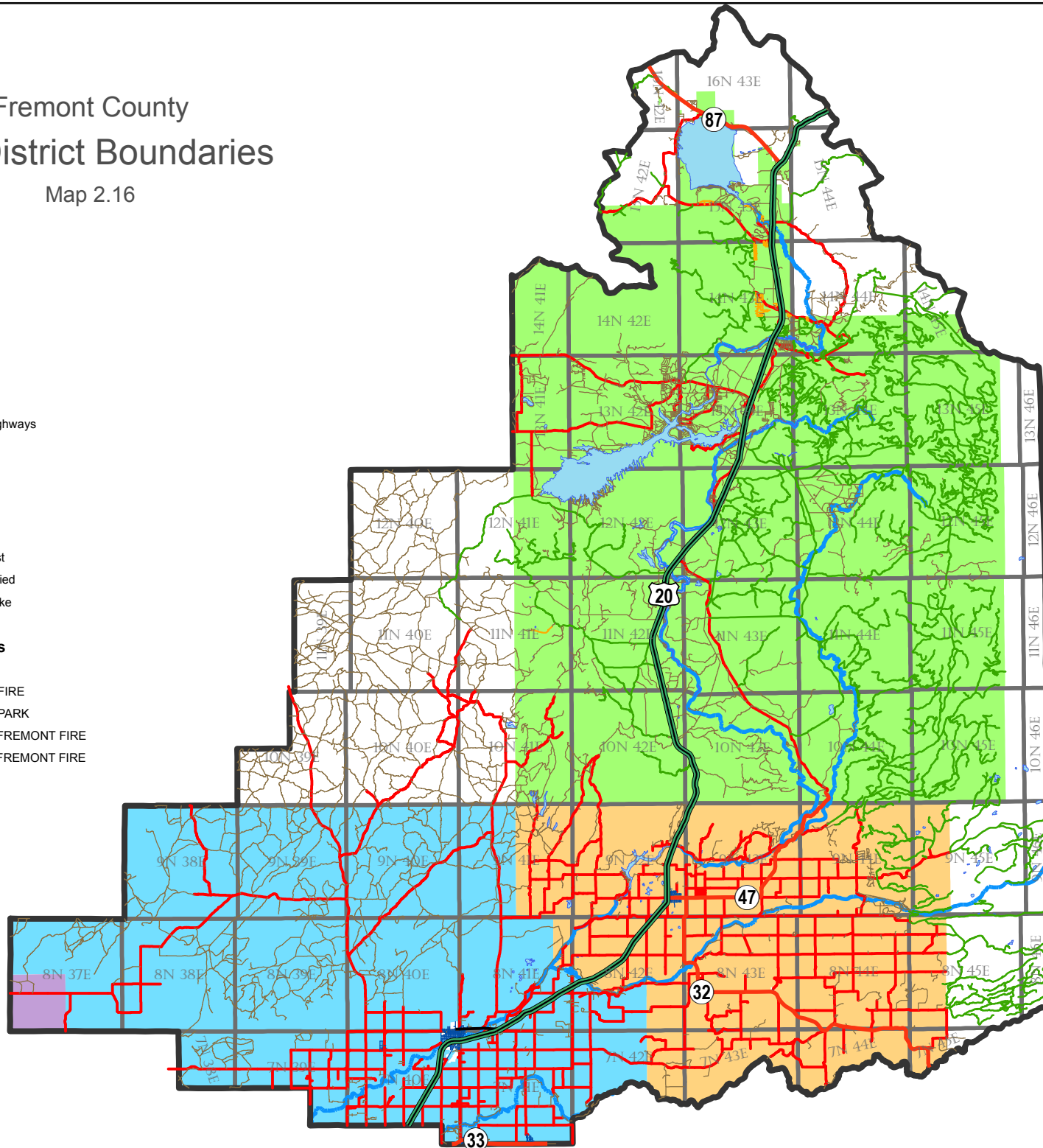
Jurisdiction

- County
- City
- Private
- US Forest
- Unclassified
- Water/Lake
- Rivers

Fire Districts

Name

- HAMER FIRE
- ISLAND PARK
- NORTH FREMONT FIRE
- SOUTH FREMONT FIRE



NOTE:

The villages of Drummond and Ashton are excluded from the North Fremont Fire District as per Commissioner Book K page 348. the Corporate limits of the City of Newdale and the City of St. Anthony are excluded from the South Fremont Fire District as per instrument number 328726.



Printed 09/30/08 by B.Moore
1 inch = 7.5 miles

Projection: State Plane NAD1983 Feet
Fremont County makes no warranty expressed or implied as to the accuracy, validity, or correctness of any of the information contained herein. Fremont County assumes no liability for direct, indirect, special, or consequential damages resulting from the use or misuse of this data or any of the information contained herein.