

Fremont County
 Sewer Systems &
 Water Vulnerability Areas
 Map 2.14



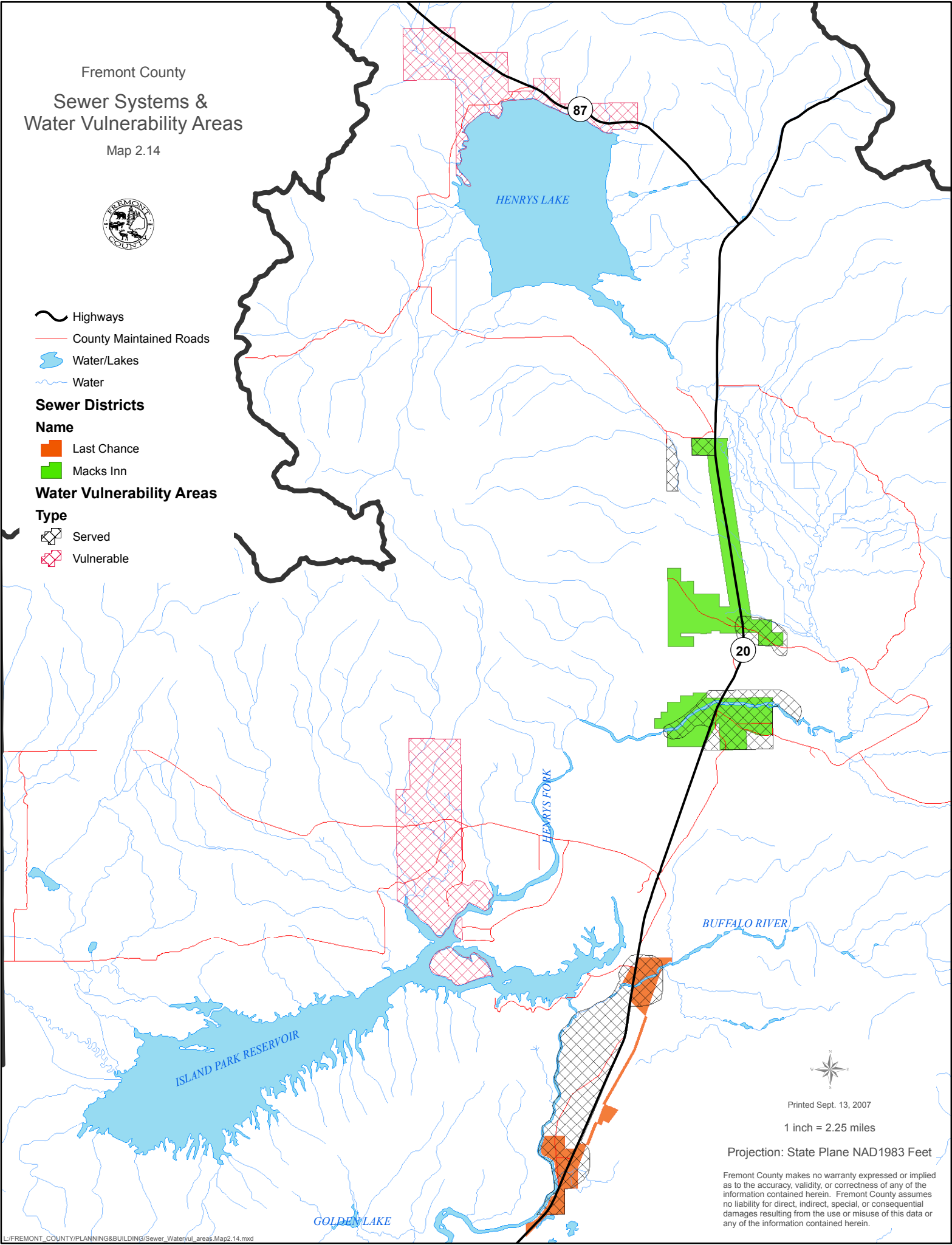
- Highways
- County Maintained Roads
- Water/Lakes
- Water

Sewer Districts

- Name**
- Last Chance
 - Macks Inn

Water Vulnerability Areas

- Type**
- Served
 - Vulnerable



Printed Sept. 13, 2007

1 inch = 2.25 miles

Projection: State Plane NAD1983 Feet

Fremont County makes no warranty expressed or implied as to the accuracy, validity, or correctness of any of the information contained herein. Fremont County assumes no liability for direct, indirect, special, or consequential damages resulting from the use or misuse of this data or any of the information contained herein.